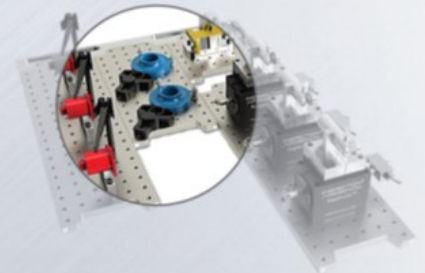


Phillips Precision

Fixturing - Simple by Design

INSPECTION ARSENAL™



Modular, magnetically interlocking quick-swap fixture solutions.

WOULD YOU SPEND \$1,000 TO SAVE \$100,000?

Inspection Arsenal® quick-swap, LEAN fixturing will help optimize your inspection process and uncover hidden profits! Whether you're buying a new CMM, retooling or surrendering old techniques, the return on investment is nearly immediate. The system is universal across all equipment—an [equipment quick reference guide](#) can be found at www.inspectionarsenal.com. If you are NOT using modular fixturing you and your company will be left behind. By using the "right" fixturing, your colleagues have uncovered extraordinary amounts of hidden profit.

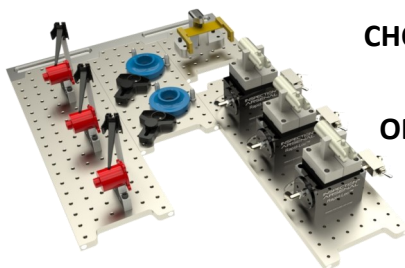


Inspection Arsenal® is the ONLY LEAN fixture system on the market.

"The Inspection Arsenal® product line eliminates many non-value added setup steps through their CMM and vision fixture plates and work holding. By "fixturing-up" and simplifying the inspection task for repeatable and documented steps, a standard work opportunity has been created to speed inspection and increase the number of parts inspected, even with a less-skilled inspector. Implementation will reduce the downtime of expensive machines on the shop floor — higher spindle utilization increases profits." Dwight Delgado, LEAN Six Sigma Practitioner

[READ FULL ARTICLE ON WEBSITE!](#)

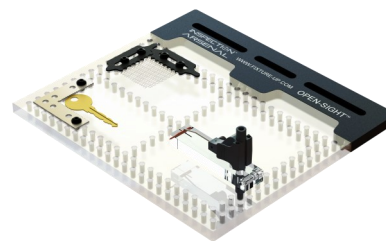
Pre-configured bundled systems for tactile and vision inspection.



CHOOSE LOC-N-LOAD™ FOR TRADITIONAL CMMs, OPTICAL COMPARATORS, AND GAGE ARMS.

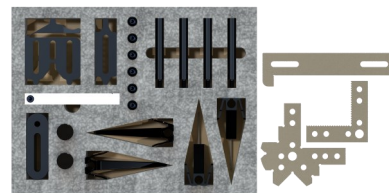
INCH—1/4-20	Clear Anodized Alum, 1x1" hole pattern, 1/2" thick	
SYS05_DK12TR03	CMM 12" Dock, Plates + 58 pc Starter Kit	\$1729
SYS05_DK12TR02	CMM 12" Dock, Plates + 70 pc Complete Kit	\$1769
SYS05_DK12TR01	CMM 12" Dock, Plates + 146 pc Works Kit	\$3369
SYS10_DK18TR03	CMM 18" Dock, Plates + 58 pc Starter Kit	\$1839
SYS10_DK18TR02	CMM 18" Dock, Plates + 70 pc Complete Kit	\$1879
SYS10_DK18TR01	CMM 18" Dock, Plates + 146 pc Works Kit	\$3479
SYS20_DK30TR03	CMM 30" Dock, Plates + 58 pc Starter Kit	\$2258
SYS20_DK30TR02	CMM 30" Dock, Plates + 70 pc Complete Kit	\$2298
SYS20_DK30TR01	CMM 30" Dock, Plates + 146 pc Works Kit	\$3898
SYS60_OC6TR03	Optical Comparator 6" Dock/Plates+ 58 pc Starter	\$1379
SYS60_DK24TR02	Gage Arm 24" Dock/Plates+70 pc Complete Kit	\$2899
METRIC—M6	Clear Anodized Alum, 20 x 20mm hole pattern, 12.7mm	
SYSM1_DK360TR03	CMM 360mm Dock, Plates + 58 pc Starter Kit	\$2139
SYSM1_DK360TR02	CMM 360mm Dock, Plates + 70 pc Complete Kit	\$2179
SYSM1_DK360TR01	CMM 360mm Dock, Plates + 139 pc Works Kit	\$3525
SYSM2_DK540TR03	CMM 540mm Dock, Plates + 58 pc Starter Kit	\$2369
SYSM2_DK540TR02	CMM 540mm Dock, Plates + 70 pc Complete Kit	\$2409
SYSM2_DK540TR01	CMM 540mm Dock, Plates + 139 pc Works Kit	\$3755
SYSM3_DK720TR03	CMM 720mm Dock, Plates + 58 pc Starter Kit	\$3269
SYSM3_DK720TR02	CMM 720mm Dock, Plates + 70 pc Complete Kit	\$3309
SYSM3_DK720TR01	CMM 720mm Dock, Plates + 139 pc Works Kit	\$4655
SYS60M_OC180TR03	Optical Comparator 180mm Dock/Plates+ 58 pc Kit	\$1800
SYS60M_DK540TR02	Gage Arm 540mm Dock/Plates +70 pc Complete Kit	\$3690

Work Holding Kit Options at bottom of Page 2.



OPEN-SIGHT™ IS YOUR CLEAR CHOICE FOR VISION INSPECTION

INCH—1/4-20	Clear Anodized Alum, 1x1" hole pattern, 1/2" thick	
SYS01_DK06VIS01	6" Dock, 6" Plate + 34 pc Vision Kit	\$ 967
SYS02_DK12VIS01	12" Dock, 12" Plate + 34 pc Vision Kit	\$1297
SYS03_DK12VIS01	12" Dock, (2) 6x8" Plates + 34 pc Vision Kit	\$1397
SYS04_DK06VIS01	6" Dock, 8x4" Plate + 34 pc Vision Kit	\$1037
SYS06_DK12VIS01	12" Dock, 12x12" Plate + 34 pc Vision Kit	\$1697
VIS-KIT-01	Vision Work Holding Kit, 34 pieces	\$ 497
METRIC—M6	Clear Anodized Alum, 20 x 20mm hole pattern, 12.7mm thick	
SYSM4_DK100V01	100mm Dock, 100x100mm Plate + 34 pc Vision Kit	\$1022
SYSM4_DK200V01	200mm Dock, 200x200mm Plate + 34 pc Vision Kit	\$1299
SYSM4_DK360V01	360mm Dock, (2)180x240mm Plates+ 34 pc Vision Kit	\$1889
VIS-KIT-01M	Vision Work Holding Kit; 34 pieces	\$ 597



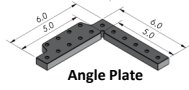
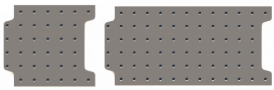
Vision Work Holding Kit
34 Pieces
Ships with bundled systems.

Most popular items listed—see full catalog and website for the complete Inspection Arsenal® product line from Phillips Precision, Inc.

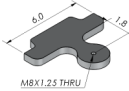
LOC-N-LOAD™ ALUMINUM

Individual rails, plates, and specialty plates.

Inquire about Air-Glide™ feature for larger plates and heavier parts.
Radial and Indexable Plates are shown to the right.



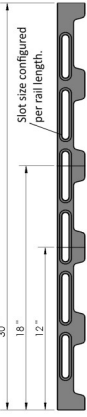
Angle Plate



Qual Bar Plate



Adapter Plate



INCH—1/4-20		
LNL-DOCK-12	12" Dock	\$280
LNL-DOCK-18	18" Dock	\$320
LNL-DOCK-30	30" Dock	\$420
LNL-PLT-0606	6X6" Plate	\$180
LNL-PLT-0612	6X12" Plate	\$250
LNL-PLT-0618	6X18" Plate	\$320
LNL-PLT-1212	12X12" Plate	\$400
LNL-PLT-1218	12X18" Plate	\$550
LNL-PLT-1818	18X18" Plate	\$1175
LNL-PLT-1824	18X24" Plate	\$1685
METRIC—M6		
LNL-DOCK-M360	360 Dock	\$340
LNL-DOCK-M540	540 Dock	\$380
LNL-DOCK-M720	720 Dock	\$490
LNL-M180180	180x180 Plate	\$290
LNL-M180360	180x360 Plate	\$480
LNL-M360360	160x360 Plate	\$790
LNL-M360540	360x540 Plate	\$1140

Specialty Plates		
Inch—1/4-20		
LNL-ADPT-06	Adapter Plate	\$119
LNL-ANGL-0603	Angle Plate	\$180
LNL-QUAL-PLT	Qualifying Ball Plate	\$250
LNL-0606-4X	Indexable Plate	\$385
LNL-RND-0608	Radial Plate	\$430
METRIC—M6		
Millimeters		
LNL-ADPT-M6	Adapter Plate	\$130
LNL-ANGL-M6	Angle Plate	\$260
LNL-QUAL-PLT-M	Qualifying Ball Plate	\$270



Specialty Work holding And Featured Products

Radial Plate

LNL-RND-0608, \$430

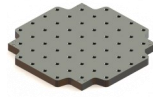
Perfect for holding round parts.
Laser marked rings make aligning easy.



Indexable Plate

LNL-0606-4x, \$385

Great for inspecting complex parts. Turn and lock plate to access hard to reach features.



Spider-Clamp™ 3-legged

SC-06-03, \$595

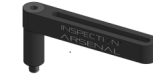
Hold round parts from 1.18" to 6" in diameter. Delicate parts held without distortion. Great for vision inspection.



Spider-Clamp™ 1-legged

SC-06-01, \$149

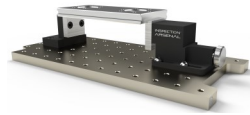
Use several of these 3" clamps to hold parts of infinite size and shape.



Spanner-Vise™

SP-VISE-2.5, \$675

2-piece vise can infinitely adjust to accommodate workpiece—lock down securely.



ER11 & ER16 Collet Chucks

CC-ER11 \$182 - CC-ER16 \$265

Hold small diameter parts and create multi-part fixtures. Opening from .012" to .312" and from .012" to .416". ER-16 is flanged for greater stability.



Sturdy Lever Clamp

LC-2.50, \$79.90

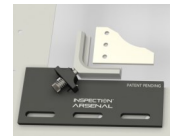
2.5" length provides up to 30-lbs of force for larger parts.



Vision Corner Block

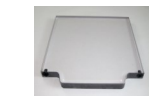
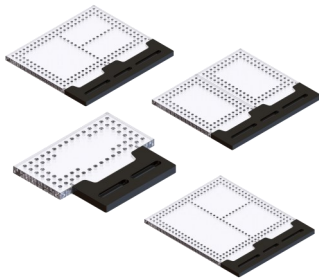
VCB-150M, \$375

Allows COMPLETE view of the part on a vision stage.

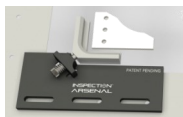


OPEN-SIGHT™ POLYCARBONATE

Individual rails, plates, and specialty plates for Vision.



Order Blank Plates and customize—add only the holes you need!



Unique Vision Corner Block!

INCH—1/4-20		
VCB-150M	Vision Corner Block	\$375
OS-DOCK-06	6" Dock	\$205
OS-DOCK-12	12" Dock	\$295
OS-PLT-0606	6X6" Plate	\$255
OS-PLT-0606-B	Plate-Blank 6x6"	\$195
OS-PLT-0608	6x8" Plate	\$275
OS-PLT-0808	8x8" Plate	\$325
OS-PLT-1208	12x8" Plate	\$495
OS-PLT-1208-B	Plate-Blank 12x8"	\$395
METRIC—M6		
Millimeters		
VCB-150M	Vision Corner Block	\$375
OS-DOCK-M200	200mm Dock, 10	\$255
OS-DOCK-M360	360mm Dock	\$439
OS-M100100	100x100 Plate	\$250
OS-M200100	200x100 Plate	\$320
OS-M200200	200x200 Plate	\$460
OS-M180240	180x240 Plate	\$429
OS-M100100-B	Plate-Blank 100x100	\$225
OS-M200200-B	Plate-Blank 200x200	\$410

VICES AND SPECIALTY WORK HOLDING

See descriptions to the right for: Spider-Clamp™ 1-leg & 3 legged; Spanner-Vise™, and Collet Chucks ER11 & ER16. Plates sold separately.

INCH—1/4-20		
Rapid-Loc™ & Modular Tower		
RL-VISE-SYS02	Rapid-Loc™ Vise SYSTEM	\$799
<i>See catalog for more</i>		
MT2-SYS-01	Modular Tower SYSTEM	\$749
<i>See catalog for more</i>		
METRIC—M6		
Millimeters		
RLM-ADAPT-02	Base Plate Adapter for METRIC Rapid-Loc™	\$90
<i>Inquire about Metric Modular Tower</i>		



Modular Tower System



Rapid-Loc™ Pneumatic Vise



Riser-Grip™ Full access clamp

INCH—1/4-20		
SC-06-03	3 Leg 6" Spider Clamp	\$595
SC-06-01	1 Leg 3" Spider Clamp	\$149
SP-VISE-2.50	Spanner Vise, 2-pc.	\$675
CC-ER11	ER Collet Chuck	\$182
CC-ER16	ER Collet Chuck, Flanged	\$265
RG-2.75	Riser-Grip™, adjustable	\$325
METRIC—M6		
Millimeters		
SC-06-03-M	3 Leg 6" Spider Clamp	\$595
SC-06-01-M	1 Leg 3" Spider Clamp	\$149
RG-2.75	Riser-Grip™, adjustable	\$325

WORK HOLDING KITS and SETS

See catalog for individual clamp components.

INCH—1/4-20		
TR-KIT-03	'STARTER' Kit - 58 pcs	\$659
TR-KIT-02	'COMPLETE' Kit - 70 pcs	\$699
TR-KIT-01	'WORKS' Kit - 146 pcs	\$2229
MAGN-SET-30	Magnetic Riser Set, 23 pcs	\$989
STOF-SET-30	Stand-Off & Rest Pad, 37 pcs	\$525
STOFE-SET-30	Enhanced Stand-Off, 16 pcs	\$749
METRIC—M6		
Millimeters		
TR-KIT-03M	'STARTER' Kit - 58 pcs	\$689
TR-KIT-02M	'COMPLETE' Kit - 70 pcs	\$729
TR-KIT-01M	'WORKS' Kit - 139 pcs	\$1999
MAGN-SET-30M	Magnetic Riser Set, 23 pcs	\$989
STOF-SET-30M	Stand-Off & Rest Pad, 37 pcs	\$525
STOFE-SET-30M	Enhanced Stand-Off, 16 pcs	\$789

